



Roxtec CF 8/32 EMC 관통 장비

알루미늄 프레임에 갖춘 전자기 차폐용

Roxtec CF 8 EMC 및 CF 32 EMC는 인클로저의 차폐 성능을 유지하도록 설계된 케이블 인입구 씰입니다. 씰은 전자기 위협으로부터 취약한 전자 장치를 보호하는 데 도움이 됩니다. 관통 장비에는 캐스트 니켈 도금 알루미늄 재질의 프레임이 있습니다. 전자기 차폐용 Roxtec ES 씰링 모듈은 다양한 크기의 케이블에 적용할 수 있습니다.



- 설치류 차단
- 경량
- 공간 효율성
- 케이블 말단 처리 허용

제품 특징점



IP/UL NEMA



EMI 보

설치 구조



캐비닛 및 인클로저

등급 및 인증

강도

- IP 66/67, UL/NEMA 4,4X,12,13

지원

- 전자기 차폐
- 등전위화

프레임 치수

mm/kg

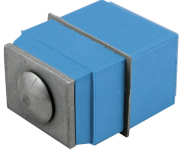
아래의 프레임 변화는 제한된 선택입니다. 프레임 및 구성의 전체 범위를 보려면 [roxtec.com](https://www.roxtec.com)을 방문하십시오.

구성	프레임 입구	모듈설치공간	외부 치수 WxHxD	홀 치수 w x h	무게	Art. 번호
CF 8 EMC	1	40 x 80	75 x 140 x 69	61(+0.5/-0.5) x 127(+0.5/-0.5)	0.37	ECF0000080035
CF 32 EMC	2	40 x 160	130 x 230 x 69	110(+0.5/-0.5) x 216(+0.5/-0.5)	1.2	ECF0000320035



씰링 컴포넌트 데이터

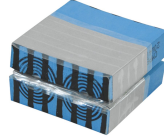
씰링 컴포넌트



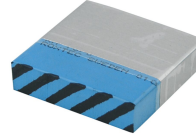
C 압축 EMC



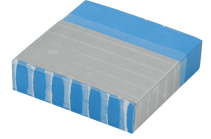
CM ES 모듈(M ultidiamet)



CM PE 모듈(M ultidiamet)



CM PE 솔리드



CM ES 솔리드

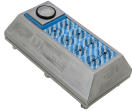


윤활제

자세한 내용은 [roxtec.com](https://www.roxtec.com)을 방문하십시오.

키트 구성의 관통장비

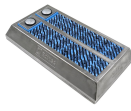
mm/kg



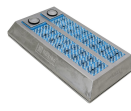
CF 8/8 ES



CF 8/8 PE



CF 32/32 PE



CF 32/32 ES

구성	구성	외부 치수 WxHxD	홀 치수 w x h	무게	Art. 번호
CF 8/5 ES	4x (3.5-16.5), 1x (9.5-32.5)	75 x 140 x 75	61(+0.5/-0.5) x 127(+0.5/-0.5)	1	192363
CF 32/20 ES	16x (3.5-16.5), 4x (9.5-32.5)	130 x 230 x 75	110(+0.5/-0.5) x 216(+0.5/-0.5)	2.5	192366
CF 8/8 ES	8x (3.5-16.5)	75 x 140 x 75	61(+0.5/-0.5) x 127(+0.5/-0.5)	1	192364
CF 8/8 PE	8x (3.5-16.5)	75 x 140 x 69	61(+0.5/-0.5) x 127(+0.5/-0.5)	0.8	192369
CF 32/32 PE	32x (3.5-16.5)	130 x 230 x 69	110(+0.5/-0.5) x 216(+0.5/-0.5)	2.5	192372
CF 32/8 ES	8x (9.5-32.5)	130 x 230 x 75	110(+0.5/-0.5) x 216(+0.5/-0.5)	2.5	192365
CF 32/32 ES	32x (3.5-16.5)	130 x 230 x 75	110(+0.5/-0.5) x 216(+0.5/-0.5)	2.5	192367
CF 32/8 PE	8x (9.5-32.5)	130 x 230 x 69	110(+0.5/-0.5) x 216(+0.5/-0.5)	2.3	192370
CF 32/20 PE	16x (3.5-16.5), 4x (9.5-32.5)	130 x 230 x 69	110(+0.5/-0.5) x 216(+0.5/-0.5)	2.3	192371
CF 8/5 PE	4x (3.5-16.5), 1x (9.5-32.5)	75 x 140 x 69	61(+0.5/-0.5) x 127(+0.5/-0.5)	0.8	192368

The product information provided by Roxtec does not release the purchaser of the Roxtec system, or part thereof, from the obligation to independently determine the suitability of the products for the intended process, installation and/or use. Roxtec gives no guarantee for the Roxtec system or any part thereof and assumes no liability for any loss or damage whatsoever, whether direct, indirect, consequential, loss of profit or otherwise, occurred or caused by the Roxtec systems or installations containing components not manufactured by an authorized manufacturer and/or occurred or caused by the use of the Roxtec system in a manner or for an application other than for which the Roxtec system was designed or intended. Roxtec expressly excludes any implied warranties of merchantability and fitness for a particular purpose and all other express or implied representations and warranties provided by statute or common law. User determines suitability of the Roxtec system for intended use and assumes all risk and liability in connection therewith. In no event shall Roxtec be liable for indirect, consequential, punitive, special, exemplary or incidental damages or losses. The Roxtec products are offered and sold in accordance with the conditions of the Roxtec General Terms of Sales. The latest version of the Roxtec General Terms of Sales can be downloaded from <https://www.roxtec.com/en/about-us/about-roxtec/general-terms-of-sales/>. We reserve the right to make changes to the product and technical information without further notice. Any errors in print or entry are no claims for indemnity. The content of this publication is the property of Roxtec International AB and is protected by copyright. This document was generated on: 2024-04-26